



W e l c o m e

Sea breezes wafting through the lush elegance of a small enclave of thoughtfully designed attached homes—this is life at Surfcrest. From the gate-guarded entrance to the impressive Club Surfcrest recreation area, this resort village has been created to provide a lifestyle available to a very few.

Located within walking distance to beautiful Huntington Beach and the prestigious SeaCliff Country Club, Surfcrest is part of one of the finest primary and secondary school districts in the state. The area is also home to one of the most outstanding park systems in Southern California.

Surfcrest. Relaxed, refined, rewarding.

Surrounded by fresh air, clear skies and the cultivated appointments of a classic beach lifestyle, you'll have a home worthy of your good taste.



Features

LUXURIOUS LIVING SPACE

- Up to 2,430 square feet
- Vaulted volume ceilings
- Formal entry with ceramic tile flooring
- Expansive living room with fireplace
- Romantic master suite with fireplace
- Lush master bath with twin-sink vanity
- Classic formal dining room
- Large linen closets (selected plans)
- Raised panel interior doors
- Hand-troweled ceiling finish
- Spacious patio
- Genuine balcony accommodating table and chairs (selected plans)
- Indoor laundry facilities
- Attached two-car garage with automatic door opener
- 2-car garage – with space for a third compact car or extra storage area (Plan 4)

TASTEFULLY DESIGNED KITCHEN

- General Electric range with energy-saving electronic ignition
- General Electric combination microwave/oven
- Whirlpool multicycle dishwasher
- Handset ceramic tile countertops
- Generous pantry
- Decorator Armstrong vinyl flooring
- Porcelain finished double sink
- Euro-style designer faucet with pull-out spray nozzle
- Dramatic recessed and undercounter lighting
- Charming breakfast nook
- Specially plumbed iceline

SPECIAL TOUCHES

- Standard Alarm System
- Water saving low-flow showers and toilets
- Dual-glazed windows
- Thermal glass door fireplaces
- 40-gallon energy-efficient gas water heater
- Protective smoke detectors

RECREATION AMENITIES

- Sparkling community pool and relaxing spa

LANDSCAPING

- Custom designed common area landscaping with automatic sprinkler system.
- All common areas and recreation areas maintained by Homeowners Association

*Please take time to visit
our Home Customizing
Studio. Our professional
in-house design team
can help you add your
own personal touches
with a wide range of
optional custom
upgrades.*

O p t i o n s

HOME CUSTOMIZING STUDIO

Whether you are making color selections from our fine included features, or adding the extras you've always dreamed of, you'll enjoy your visit to our Home Customizing Studio to personalize your home. The following is a list of features available at the Home Customizing Studio for an additional charge.

MASTER BEDROOM SUITE

- Marble or granite designed master bath with coordinated fixtures featuring brass accents
- Custom designed tile selections
- Relaxing whirlpool Jacuzzi™ Spa
- Master bath suite door

KITCHENS

- Complete selection of imported tile
- Countertops with full splash or assorted trims
- Custom granite counters
- Complete appliance upgrades, including built-in refrigerators
- Water purification system
- Instant hot water
- Oak and Maple cabinetry in choice of natural or whitewash stain
- Corian™ Countertops

FLOOR COVERINGS

- Luxurious nylon carpet featuring Stainmaster by Dupont™
- Quality padding upgrades
- European 100% wool berber carpet
- Custom-designed hardwood flooring
- Decorative vinyl flooring
- Imported marble and ceramic tile floors

ADDITIONAL CUSTOM APPOINTMENTS

- Elan™ home electronics network telecommunication system
- Designer ceramic tile selections for all areas
- Custom mirrored wall treatments
- Additional security system features
- Decorator-coordinated window treatments: mini blinds, verticals, wood blinds and custom shutters
- Glass tub enclosures for secondary baths
- Air conditioning
- Extra electrical, TV and phone jacks including dedicated Fax and computer lines
- Wardrobe doors featuring beveled glass
- Maple or oak staircase
- Additional garage door transmitter
- Bedroom-den conversion (Bermuda, Plan 2 and Catalina, Plan 3)
- Crown moulding

Please note, any options or upgrades must be selected prior to building cut-off dates.

A n t i g u a

**2,030 feet of
airy space**

**Two
bedrooms**

Two baths

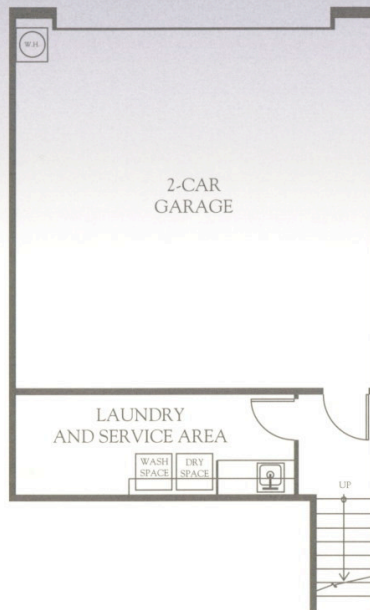
Powder room

1

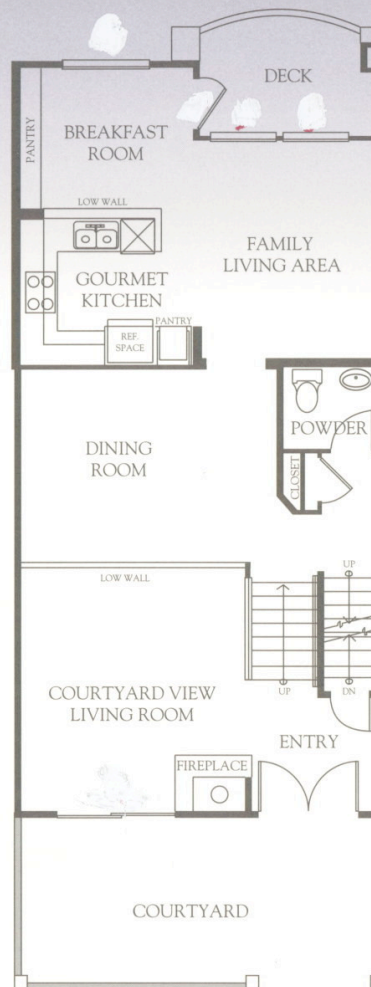
Uniquely suited for living in comfort and style, the Antigua home features a spacious entry patio and a romantic private master suite accented with a woodburning fireplace. The kitchen flows into the den and adjoins a spacious deck, offering ample room to relax or visit.



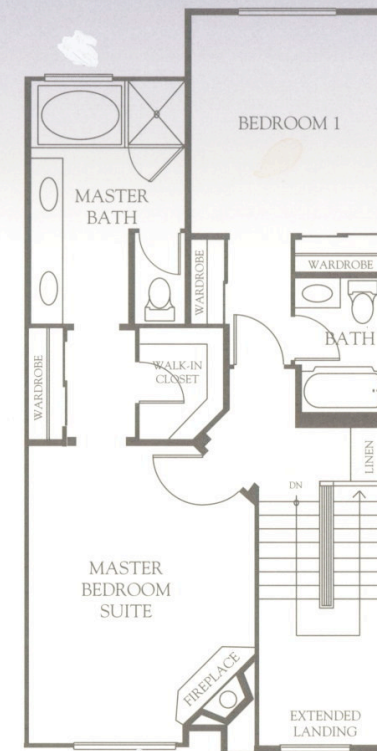
Antigua



LOWER LEVEL



1ST FLOOR



2ND FLOOR

The builder reserves the right to make modifications in materials, specifications, plans and designs without prior notice.

B e r m u d a

**2,140 feet of
light-filled
space**

**Three
bedrooms**

Two baths

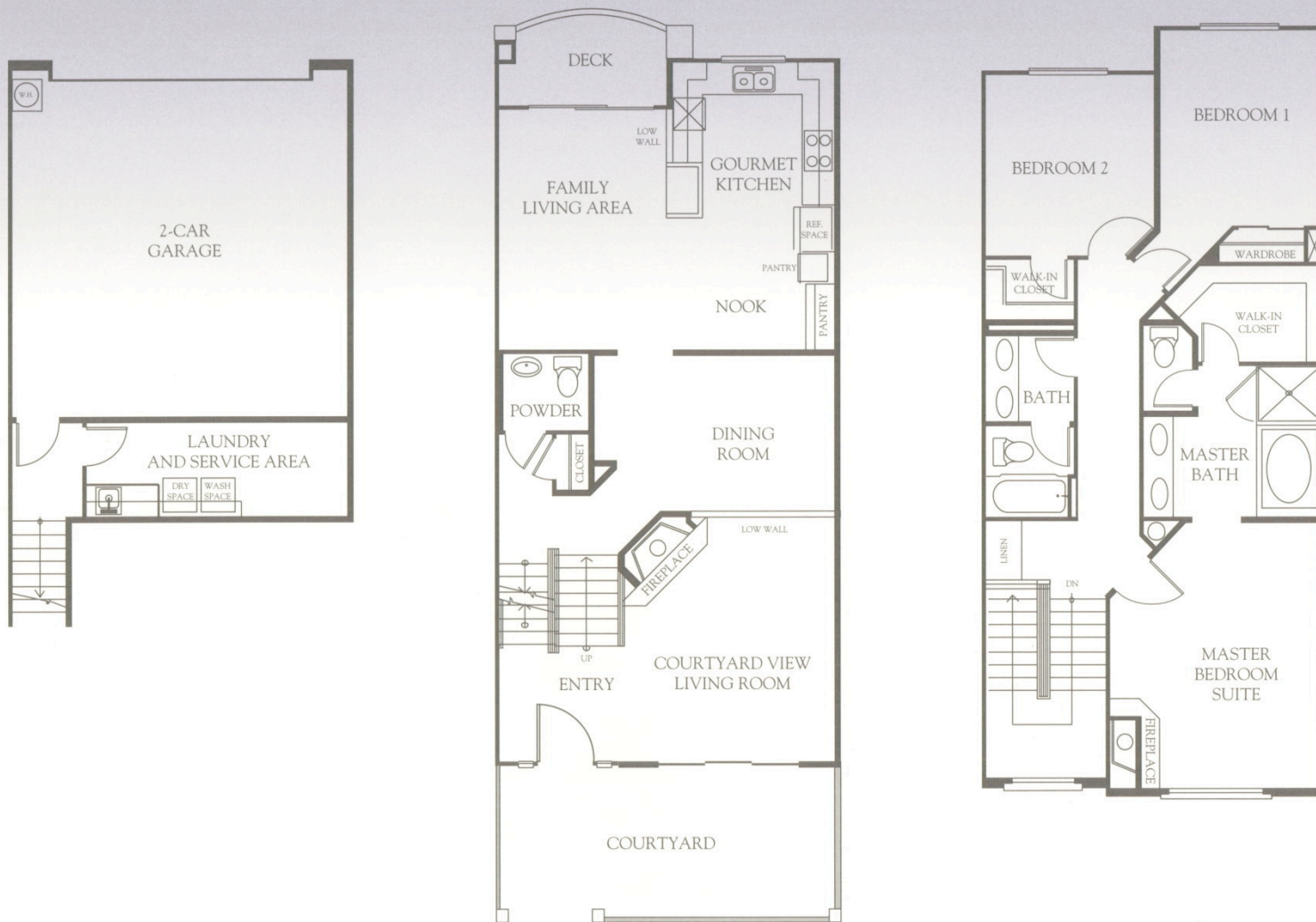
Powder room

2

The appealing warmth of the Bermuda home emanates from its two woodburning fireplaces, one in the living room, the other in the master suite. Each day starts joyfully in a large kitchen and breakfast nook next to a morning room, imparting a fresh, country-kitchen feel to the floorplan. There is a large laundry area and generous storage space as well.



B e r m u d a



LOWER LEVEL

1ST FLOOR

2ND FLOOR

The builder reserves the right to make modifications in materials, specifications, plans and designs without prior notice.

Catalina

**2,150 feet
of panache**

**Three
bedrooms**

Two baths

Powder room

3

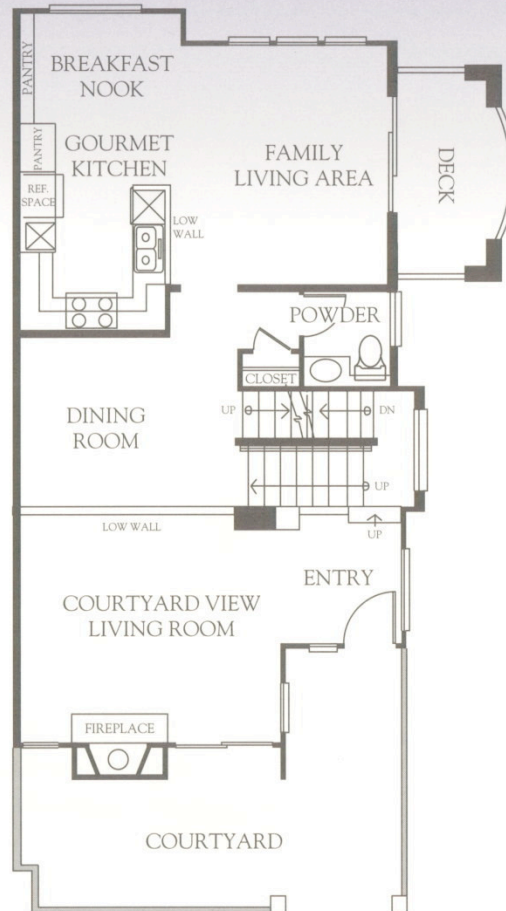
Enjoy the luxury of open spaces in the Catalina home, offering a touch of elegance in every room. From a substantial kitchen to the formal dining area, it is abundant with the fine details that enhance gracious living. A large master bedroom suite features a generous walk-in closet for leisurely dressing.



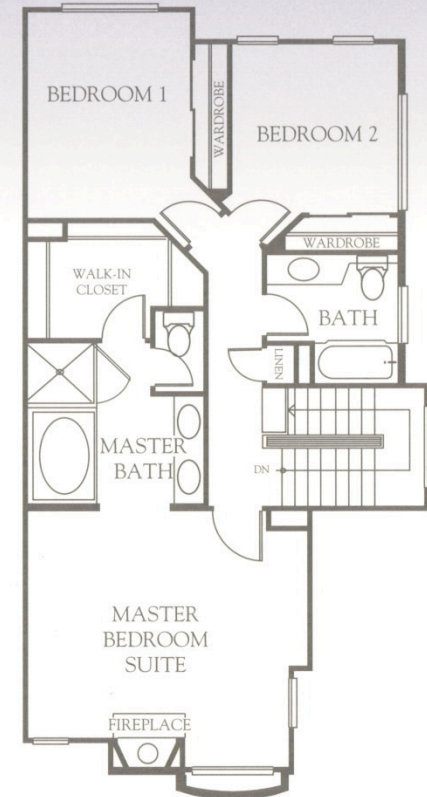
Catalina



LOWER LEVEL



1ST FLOOR



2ND FLOOR

Del Sol

**2,430 feet
of distinction**

**Three
bedrooms**

Two baths

Powder room

4

The exquisite style of the graceful Del Sol home features a generous front patio to present an impressive entrance. The kitchen is a wonder, with a sizeable breakfast nook on one end and a large sunwashed morning room on the other. Entertain with confidence in the elegant ambiance of an oversized formal dining room overlooking the living area. All in all, a truly prestigious living space. A two-car garage provides space for a third compact car or extra storage area.



[illegible]

2ND FLOOR

The builder reserves the right to make modifications in materials, specifications, plans and designs without prior notice.